

THE WOLF BANES TECHNICAL RIDER

CONTACTS

MANAGEMENT :	Happy Few	0032 38 66 30 47	info@happyfew.be
TOURMANAGEMENT :	Nico Verberdt	0032 485 62 75 81	verberdt.nico@pandora.be
SOUND :	Bryzze	0032 495 54 51 06	info@bryzze.be
LIGHTS :	Axel Belmans	0032 475 82 11 42	axse@axse.be

FOH

- A GOOD QUALITY DESK with at least 32 mono ch and 4 stereo, 8 subgrp, 8 VCA, Midas XL200/ Soundcraft MH, series 4/5,..
- No spirit/behringer/mackie/ Allen & Heath please, in case of digital desk, let us know in advance so I can look up the manual..
- 2 SPX 90/900/990
- 1 eventide H3000 D/S..
- 1 TC 2290/D2/.. ROLAND.. tap delay
- 8 gates (bss/ drawner), 8 comps (bss/dbx)
- Graphic eq.
- **CD PLAYER FOR INTRO, MUST BE ABLE TO SEND IT BACK 2 STAGE**
- If you ask us what pa system, turbosound flood/flash is a winner...

STAGE

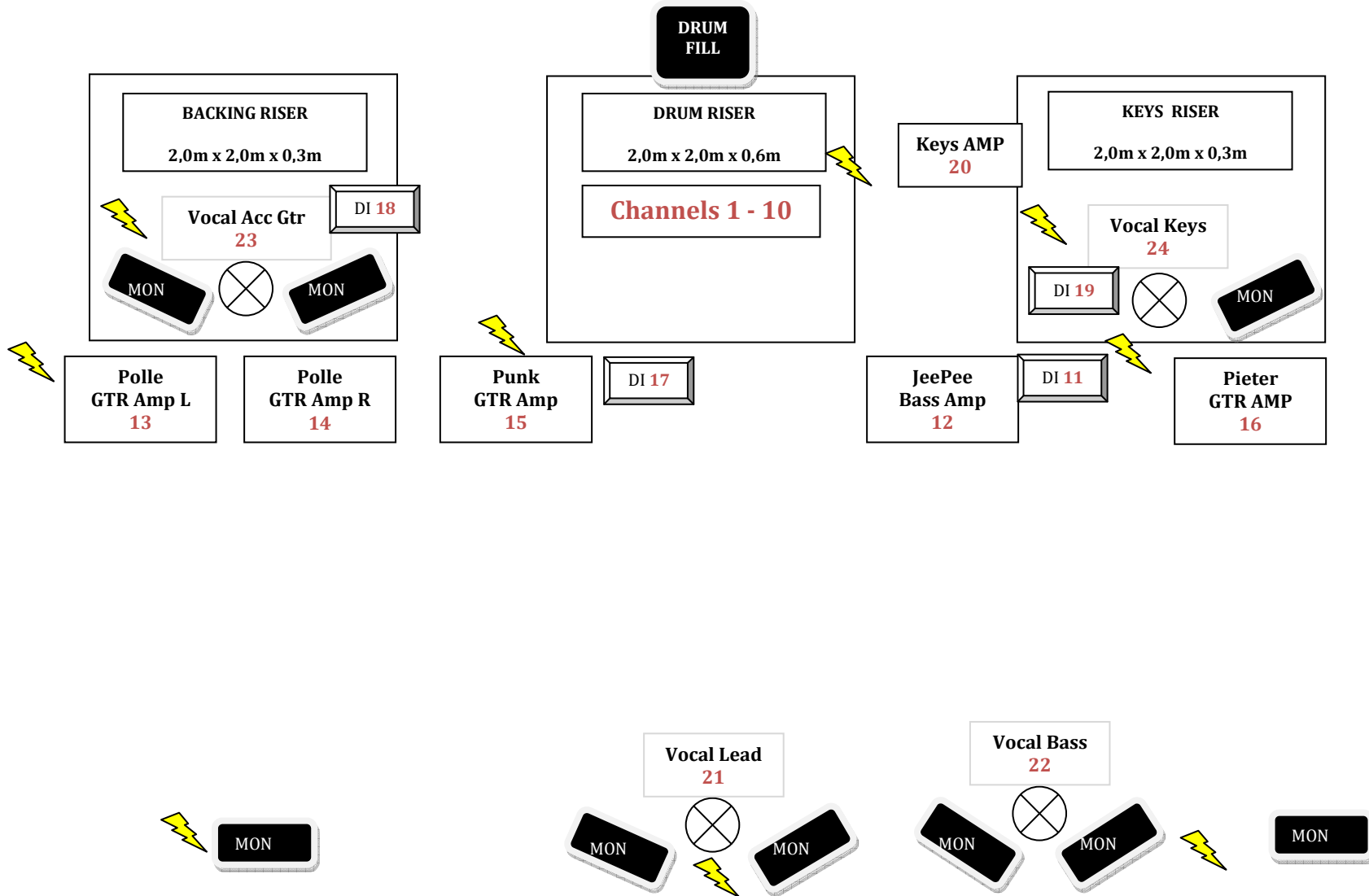
- 7 seperate lines monitoring (martin LE400, nexo PS15,...you know, a 15" low with 1.5" horn that hits you in the face)
- For big open air stages are side fills always nice..
- A good qualified monitor engineer !!!!!!! (The one we had now lives in monastery)
- 3 rock-solid risers with dark carpet (drums 2m x 2m x 0,6m / keys 2m x 2m x 0,6m / backing vocals 2m x 2m x 0,6m)
- Backline power ⚡
- MINI GERBS (6-8 seconds /safety distance: 3 meter / safety height: 4 meter / hot exhaust) – left and right in front of the stage or in truss. **(for more info call Axel Belmans (and please do!))**

CHANNEL LIST

	CHANNELS	MICS	INSERTS	STANDS
1	KICK	B 91	GATE 1	
2	KICK	B 52	GATE 2	SMALL BOOM
3	SNARE TOP	SHURE SM 57	GATE 3	SMALL BOOM
4	SNARE BOTTOM	SHURE SM 57	GATE 4	SMALL BOOM
5	HI-HAT	SHURE SM 81		SMALL BOOM
6	RACK TOM	SHURE SM 57	GATE 5	SMALL BOOM
7	FLOOR TOM 1	SHURE SM 57	GATE 6	SMALL BOOM
8	FLOOR TOM 2	SHURE SM 57	GATE 7	SMALL BOOM
9	OH L	SHURE SM 81		TALL BOOM
10	OH R	SHURE SM 81		TALL BOOM
11	BASS	BSS DI	COMP 1	
12	BASS AMP	SHURE SM 57		SMALL BOOM
13	EL GTR POLLE L	SHURE SM 57		SMALL BOOM
14	EL GTR POLLE R	SHURE SM 57		SMALL BOOM
15	EL GTR PUNK	SHURE SM 57		SMALL BOOM
16	EL GTR PIP	SHURE SM 57		SMALL BOOM
17	ACC GTR PUNK	BSS DI	COMP 2	
18	ACC GTR LUC	BSS DI	COMP 3	
19	KEYS	BSS DI		
20	KEYS AMP	SHURE SM 57		SMALL BOOM
21	VOC LEAD PUNK	B 58	COMP 4	STRAIGHT ROUND BASE
22	VOC BASS	B 58	COMP 5	TALL BOOM
23	VOC ACC GTR LUC	B 58	COMP 6	TALL BOOM
24	VOC KEYS	B 58	COMP 7	TALL BOOM

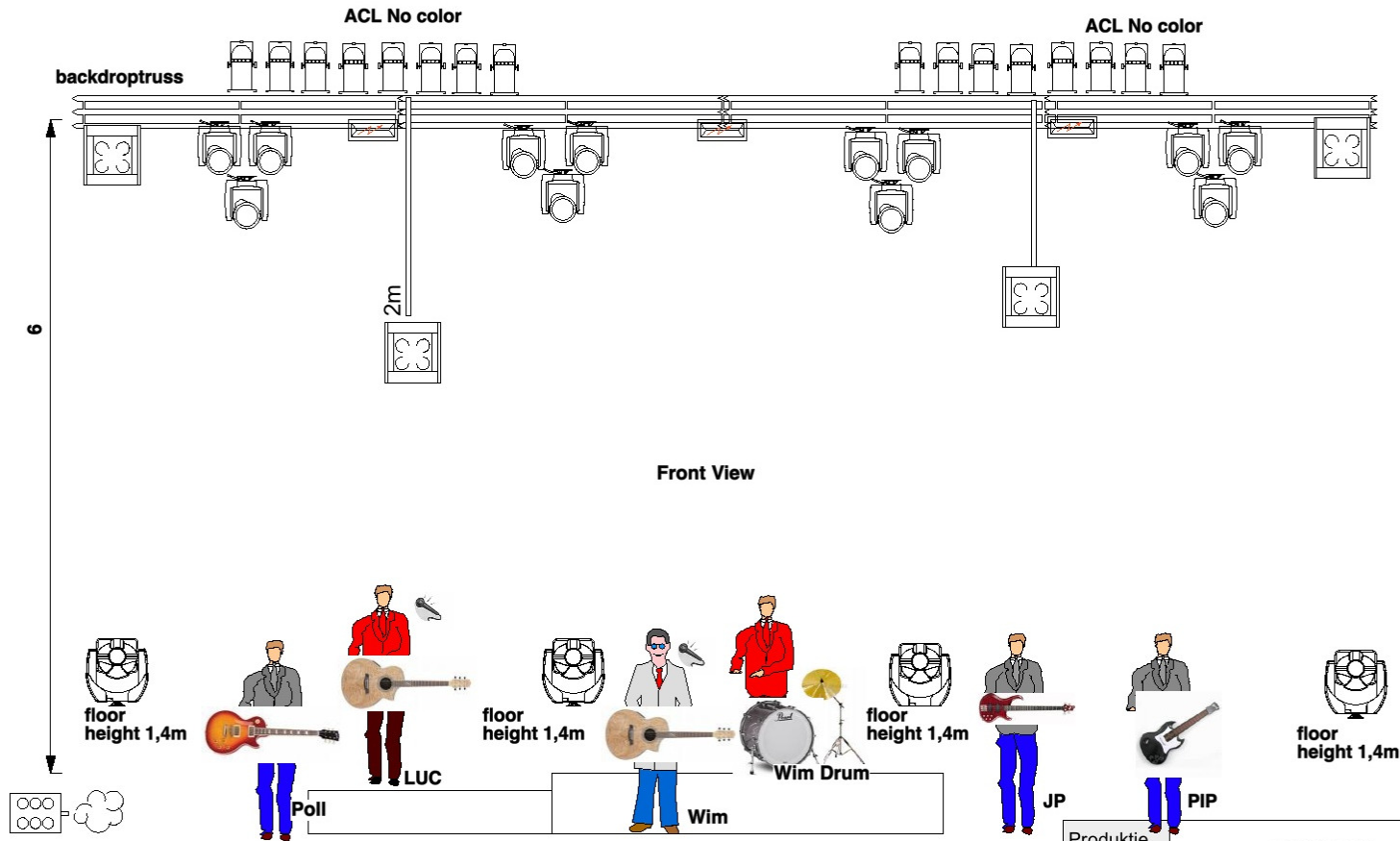
PLEASE PROVIDE TALKBACK MIC AND COMMUNICATION SET BETWEEN FOH AND STAGE !!!

STAGEPLAN



LIGHTS FRONT

DESK: CHAMSYS MAGIC Q PRO 100 + WING



Produktie	LIGHTPLOT THE WOLBANES 2009		
Locatie	Axel Belmans		
Ontwerp	0032 475 821142		
Getekend	info@axse.be		
Schaal	1/50		
Datum	2009	Versie	1.1

LIGHTS TOP

Top View

